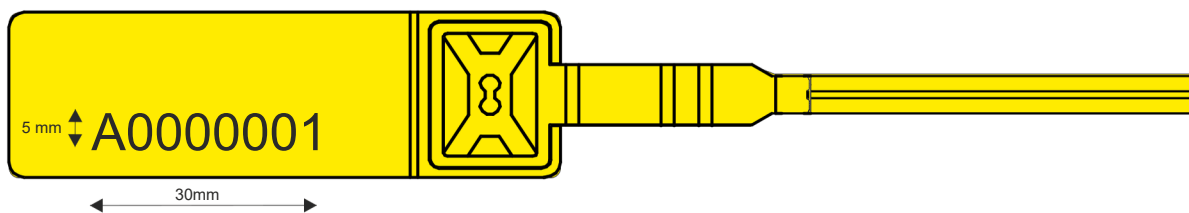


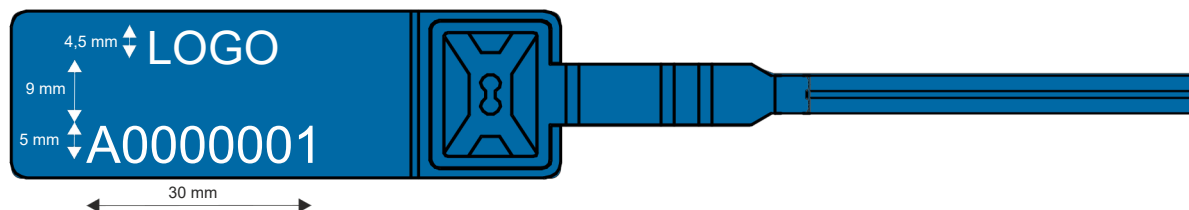
## TYPE A

### A - numbering

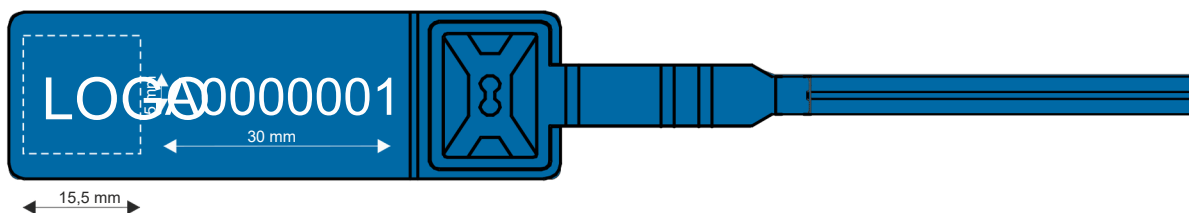


## TYPE B

### B1 - logo + numbering

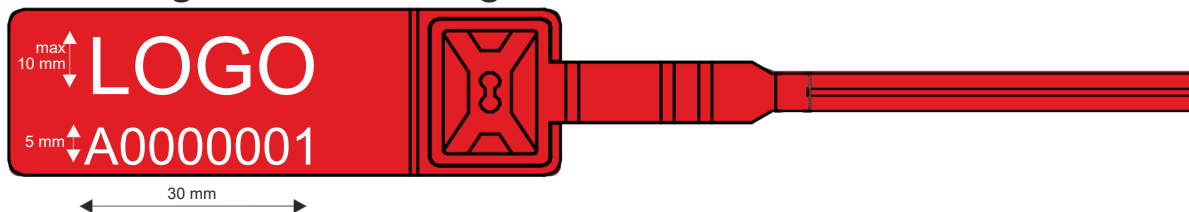


### B2- logo + numbering

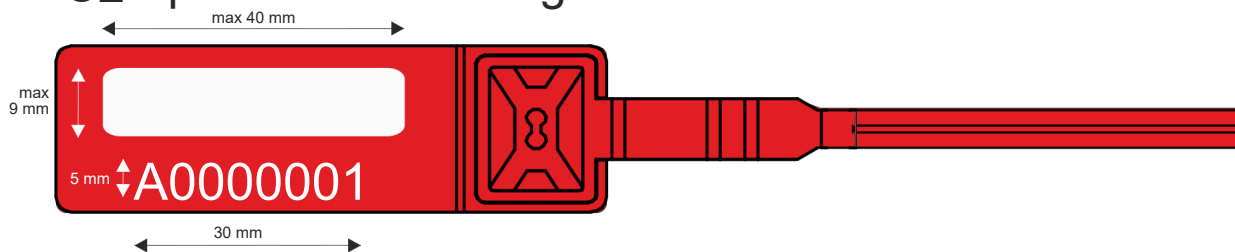


## TYPE C

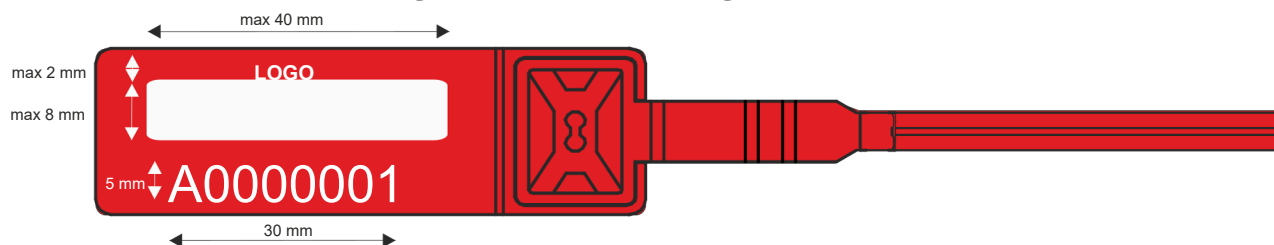
### C1 - logo + numbering



### C2 - panel + numbering

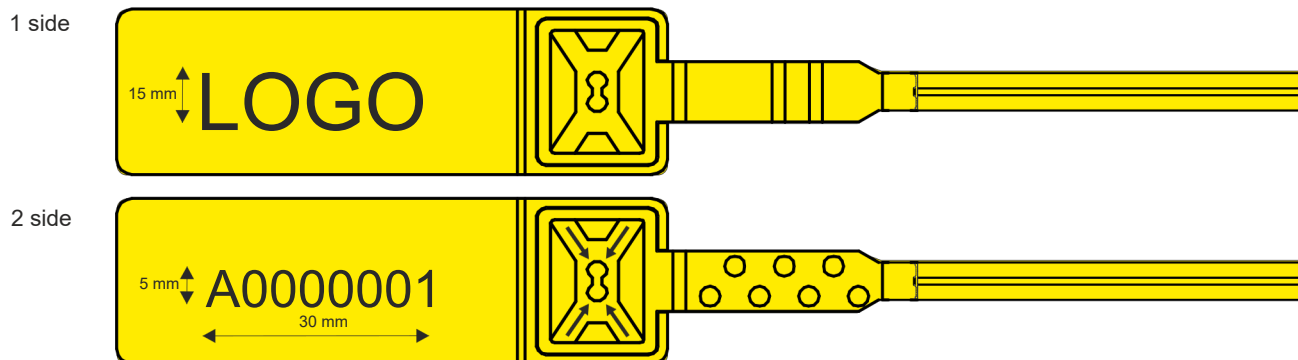


### C3 - panel + logo + numbering



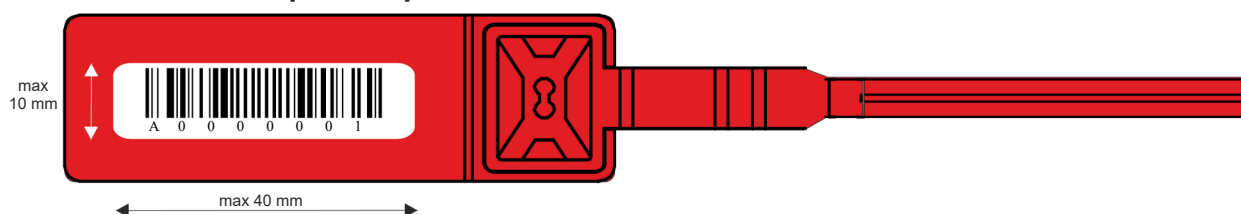
## TYPE D

### D - logo + numbering 2 sides

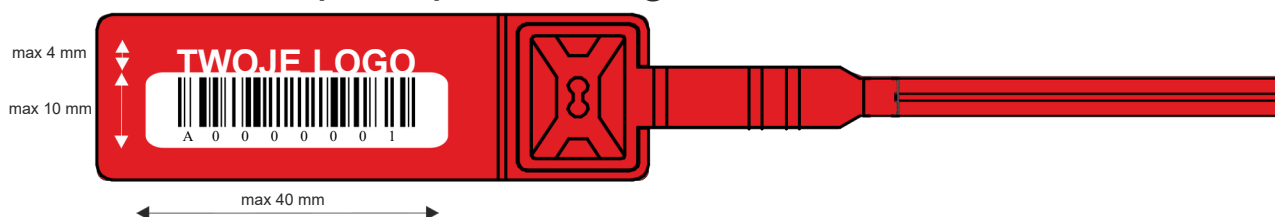


## TYPE E

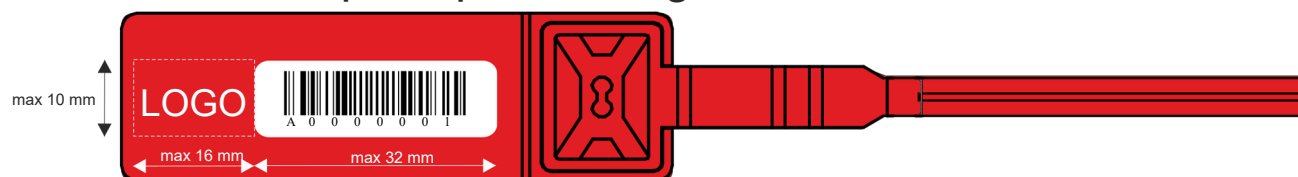
### E1 - descriptive panel + Barcode



### E2 - descriptive panel + logo + Barcode



### E3 - descriptive panel + logo + Barcode



## TYPE F

### F1 - descriptive panel + logo + Barcode

